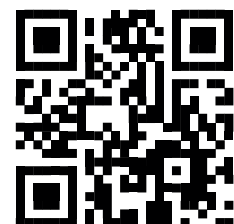
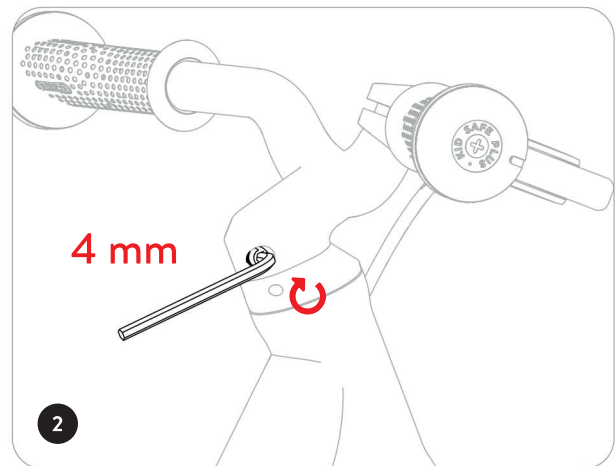
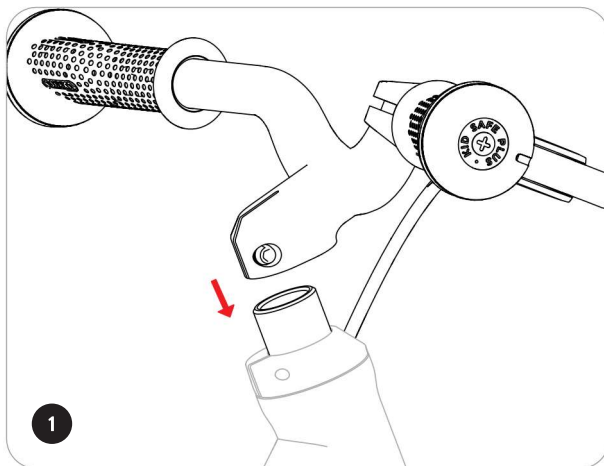


Instructions for use
11.20

woomTM ORIGINAL **1** / **1** PLUS

woom™ ORIGINAL 1

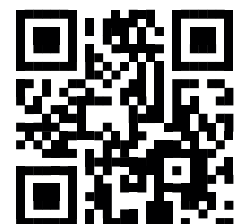
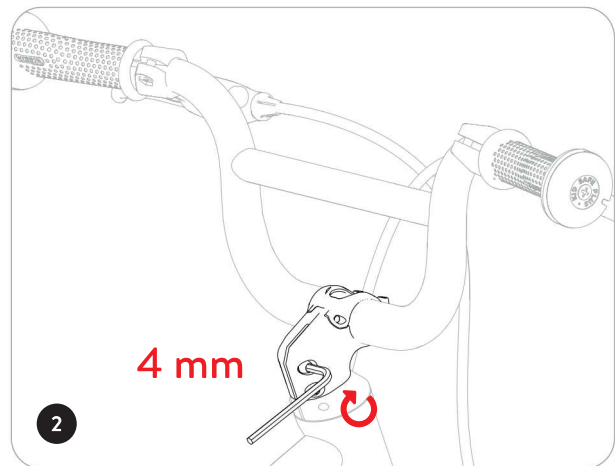
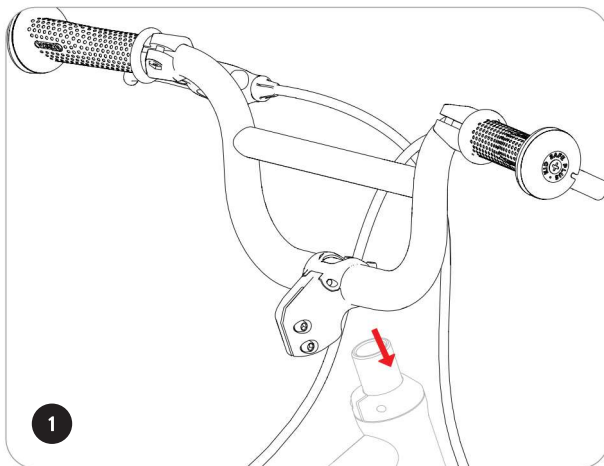
Tools



find more
information here

woom™ ORIGINAL 1 PLUS

Tools



find more
information here

These instructions contain information on the safe use of the balance bike. Please read the instructions before using the balance bike for the first time and store them for future reference. Used and maintained properly, the woom balance bike will be a source of great joy and fun for your child.

WARNING! Protective equipment must be worn. Not to be used in traffic. Maximum load: 50 kg

Before using the balance bike for the first time, please ensure that:

- ✓ the saddle and handlebars are tightened to the necessary torque level.
- ✓ the saddle is set at the right height such that your child can set off and stop safely.
- ✓ the brake is fully functional and the brake lever can be easily reached by your child.
- ✓ the wheels are securely attached to the forks and can spin freely.
- ✓ the screws, bolts and nuts are fully tightened and other components are firmly attached.
- ✓ the tyres, rims and frame are undamaged and have no foreign objects attached to them.
- ✓ the tyres are pumped to the recommended pressure (see information on the side of the tyre).

Responsibility of parents

Unforeseen situations may arise when your child uses the balance bike. Please make your child aware of possible dangers. Good bike-handling skills are necessary in order to avoid falls or crashes which may injure your child or other children playing nearby. Show your child how to use the woom correctly and how they can use their feet to stop safely at any time.

Warnings

When using the woom your child must wear sturdy, closed shoes and suitable protective equipment (children's helmet and gloves). Never let your child ride unsupervised. Do not let your child ride near stairs, slopes, steep terrain or bodies of water. Never let your child continue to ride

the woom if the balance bike develops a technical defect. The valve cap should always be screwed on tightly enough that it cannot be removed by your child, otherwise it should be removed/not fitted. We use materials of the highest quality to make our steering limiter, a device designed to prevent children overturning the handlebars. However, there is still a risk that under certain circumstances the rubber ring may break. If this should happen, please replace the ring without delay. The original spare part is available from our online shop.

Correct use

The woom 1 / 1 PLUS does not meet the legal requirements set out in the Highway Code for Great Britain and Northern Ireland. Therefore, it must not be used in road traffic. We recommend the woom 1 for children 82-100 cm, the woom 1 PLUS for children 95-110 cm tall. The saddle height can be adjusted by opening the seat clamp using a hex key and moving the seat post up or down. Please ensure that your child's legs are slightly bent at the knees and that both feet are touching the ground. Please ensure that your child can easily reach the handlebars. Check the tyre pressure regularly.

Brake

The woom 1 is designed for children aged 1.5 years and older. They may not yet be able to understand the braking system and correctly operate the hand brake. As a parent it is important that you do not rely on your child being able to stop whenever it wants. For this reason, it is essential that there is always an adult present to supervise the child when riding.



The woom 1 / 1 PLUS balance bike meets the standards and testing methods set out in **European standard EN 71** (safety of toys) and fulfils the requirements set out in Directive 2009/48/EC on the safety of toys. It therefore bears the CE marking.

Welcome to the woom family!

Thank you for choosing a woom bike. We value the trust you have placed in us and are delighted that you are joining the woom family. If you ever have a problem with your woom bike, you can contact your woom retailer or us directly at any time. Just give us a call or send an e-mail. We will do all we can to help you as quickly as possible, until you are fully satisfied that your issue has been resolved. Have fun on your new woom bike!



Marcus Ihlenfeld
Founder and CEO
woom



Christian Bezdeka
Founder and CEO
woom



EU **+43 2243 23923**
US **+855-966-6872**

woom@woom.com
usa@woombikes.com

